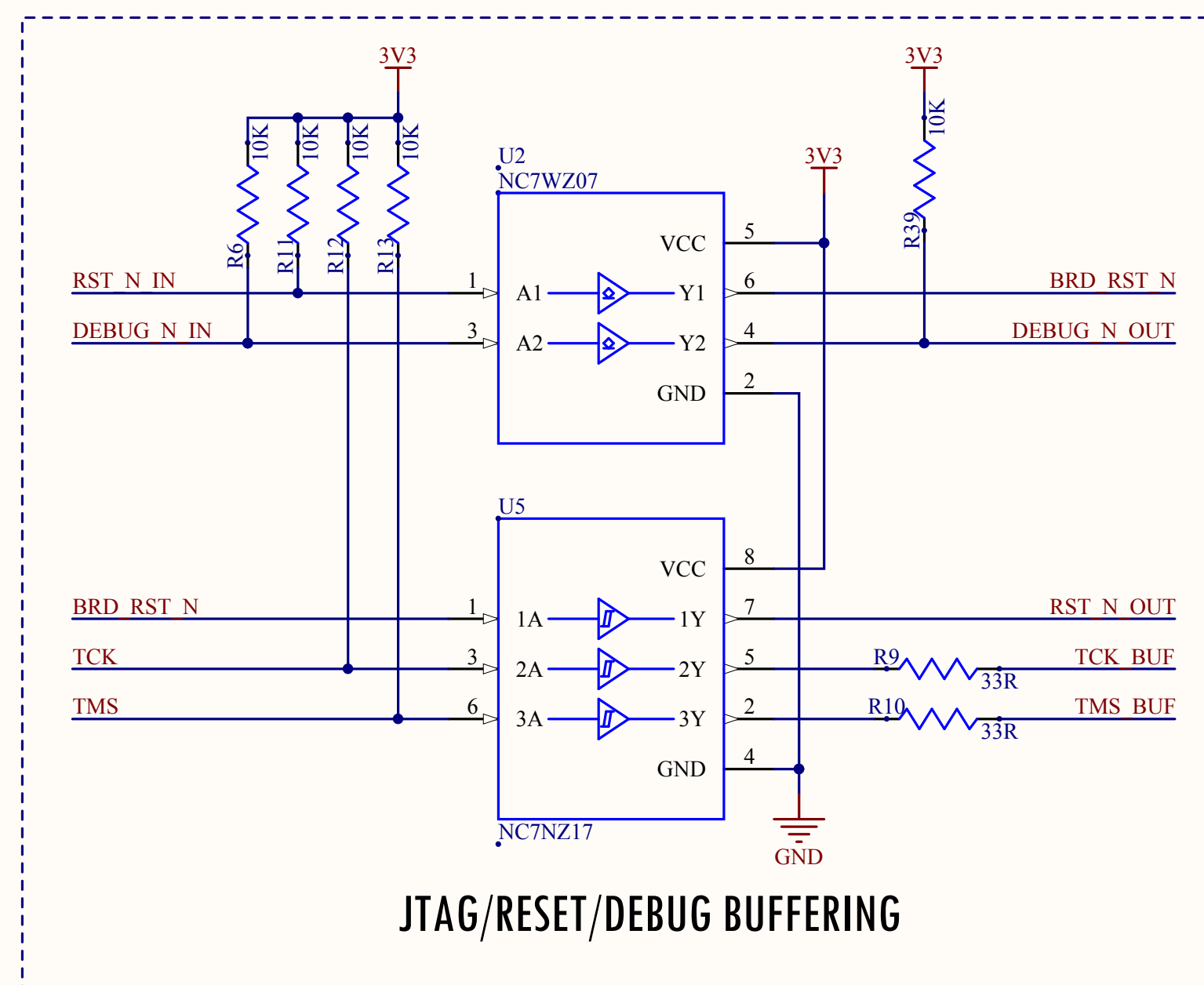
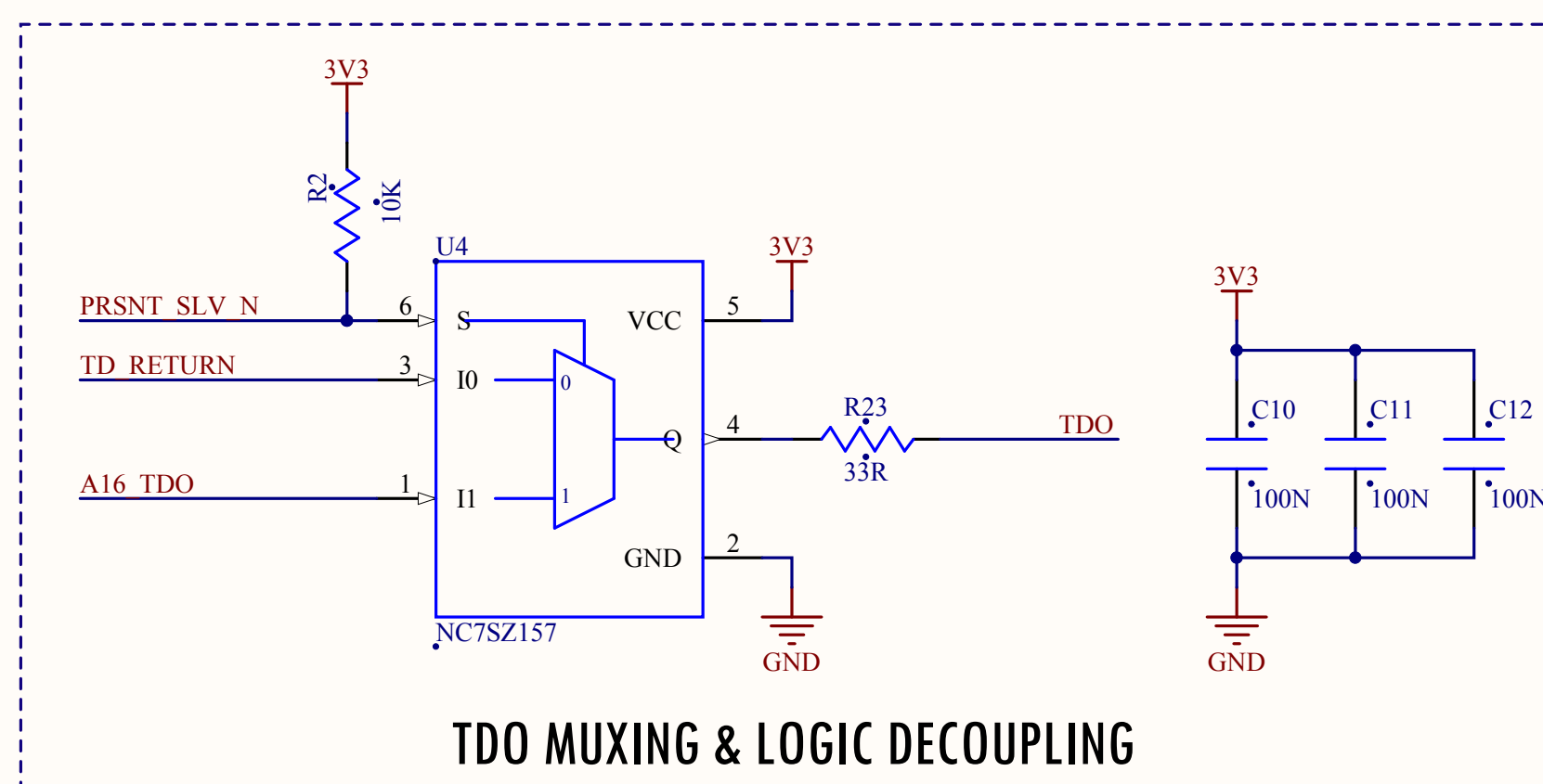
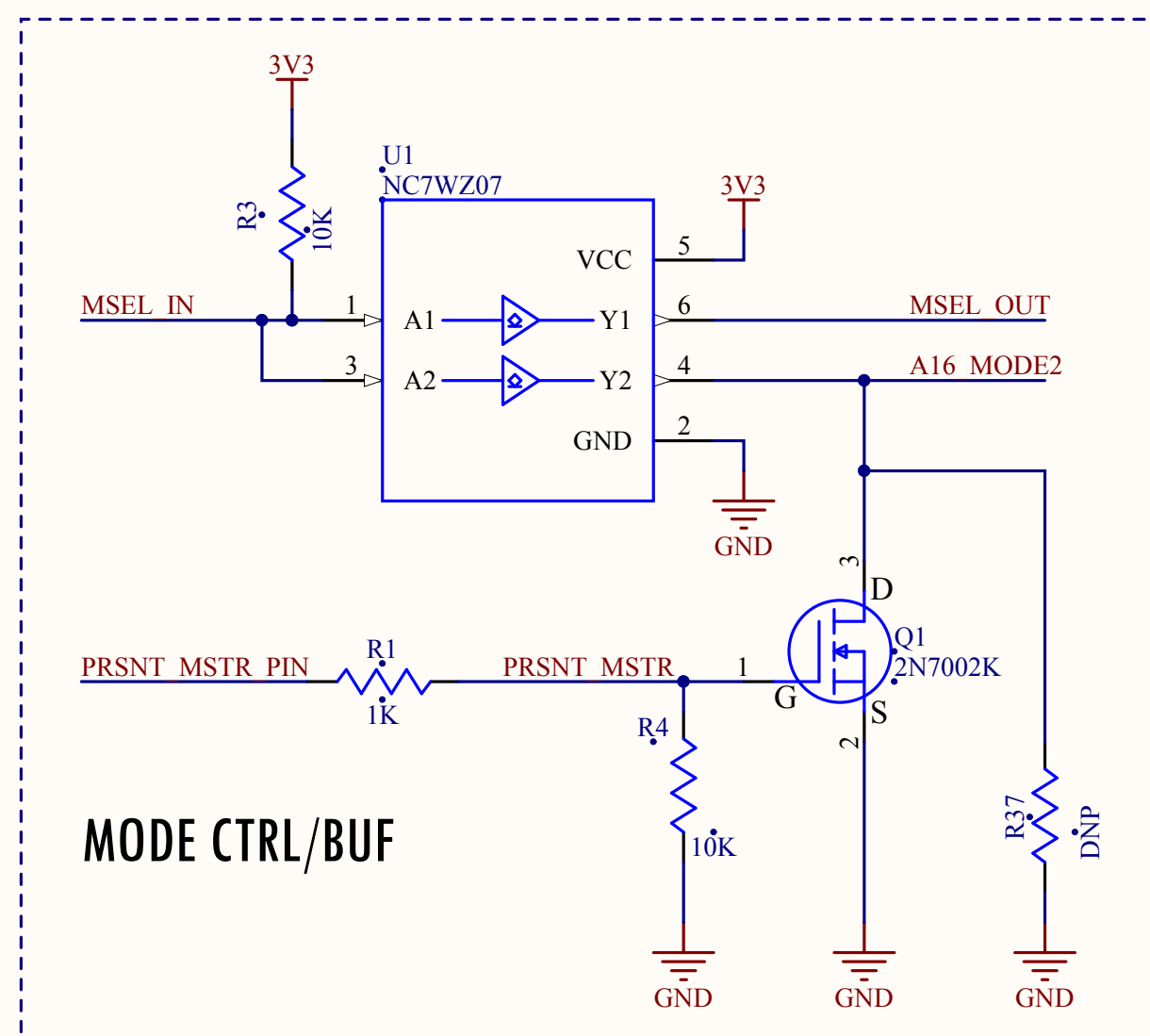
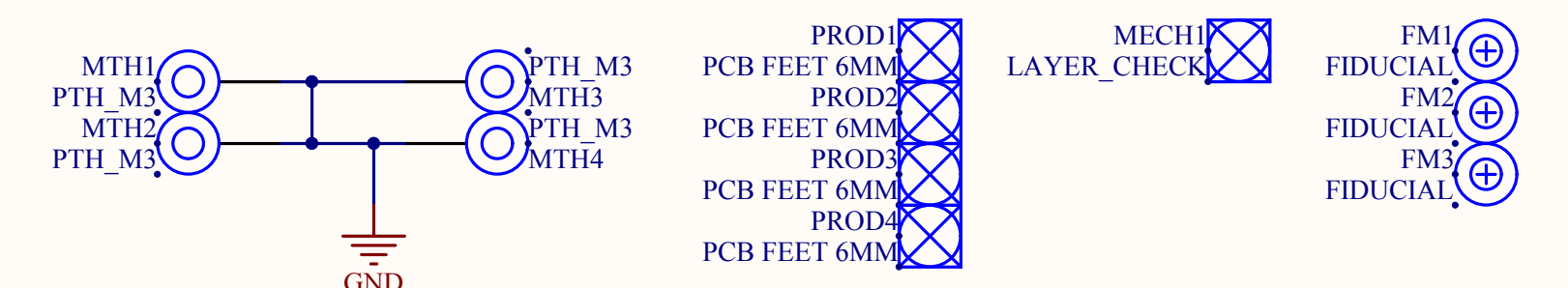
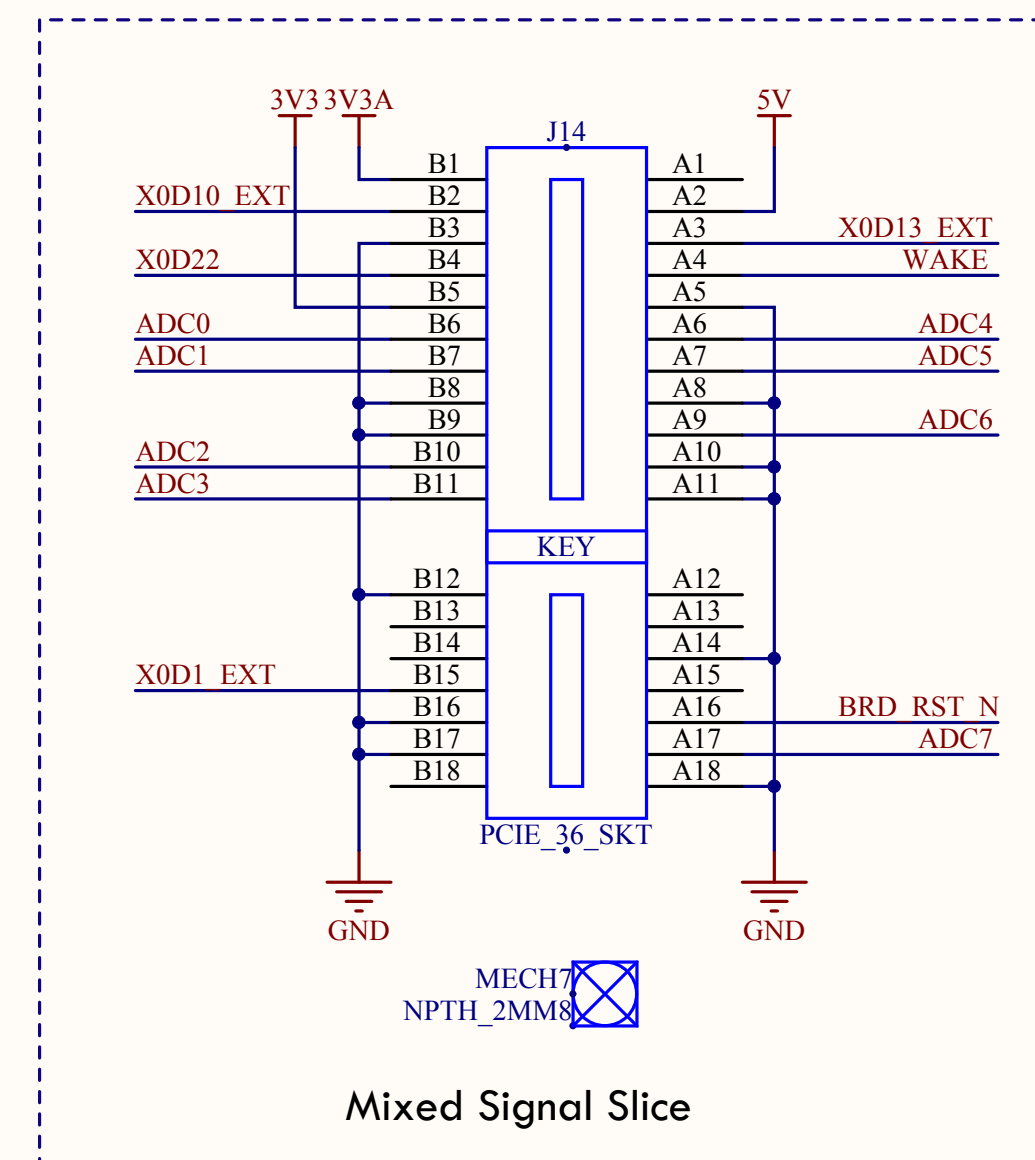
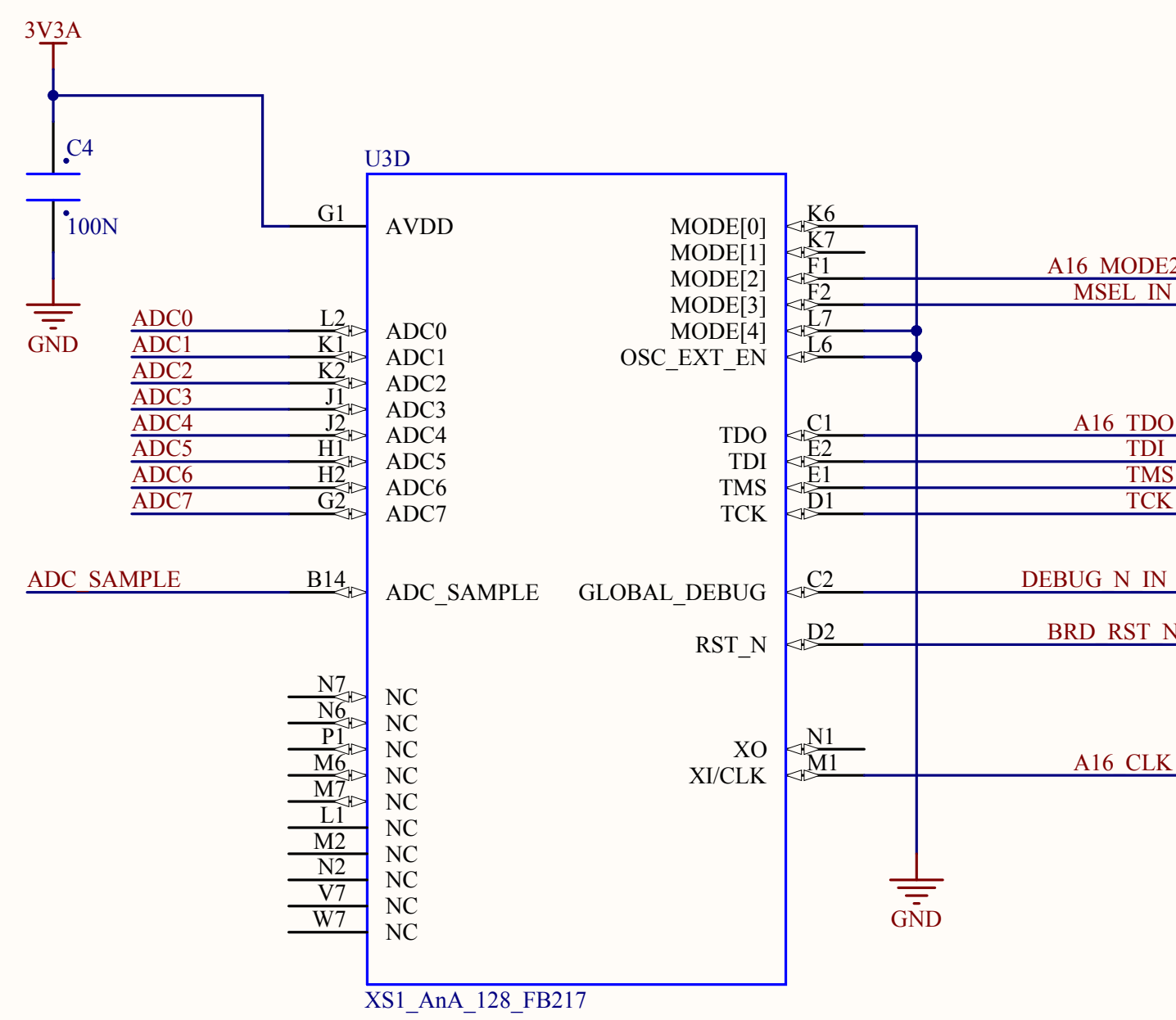
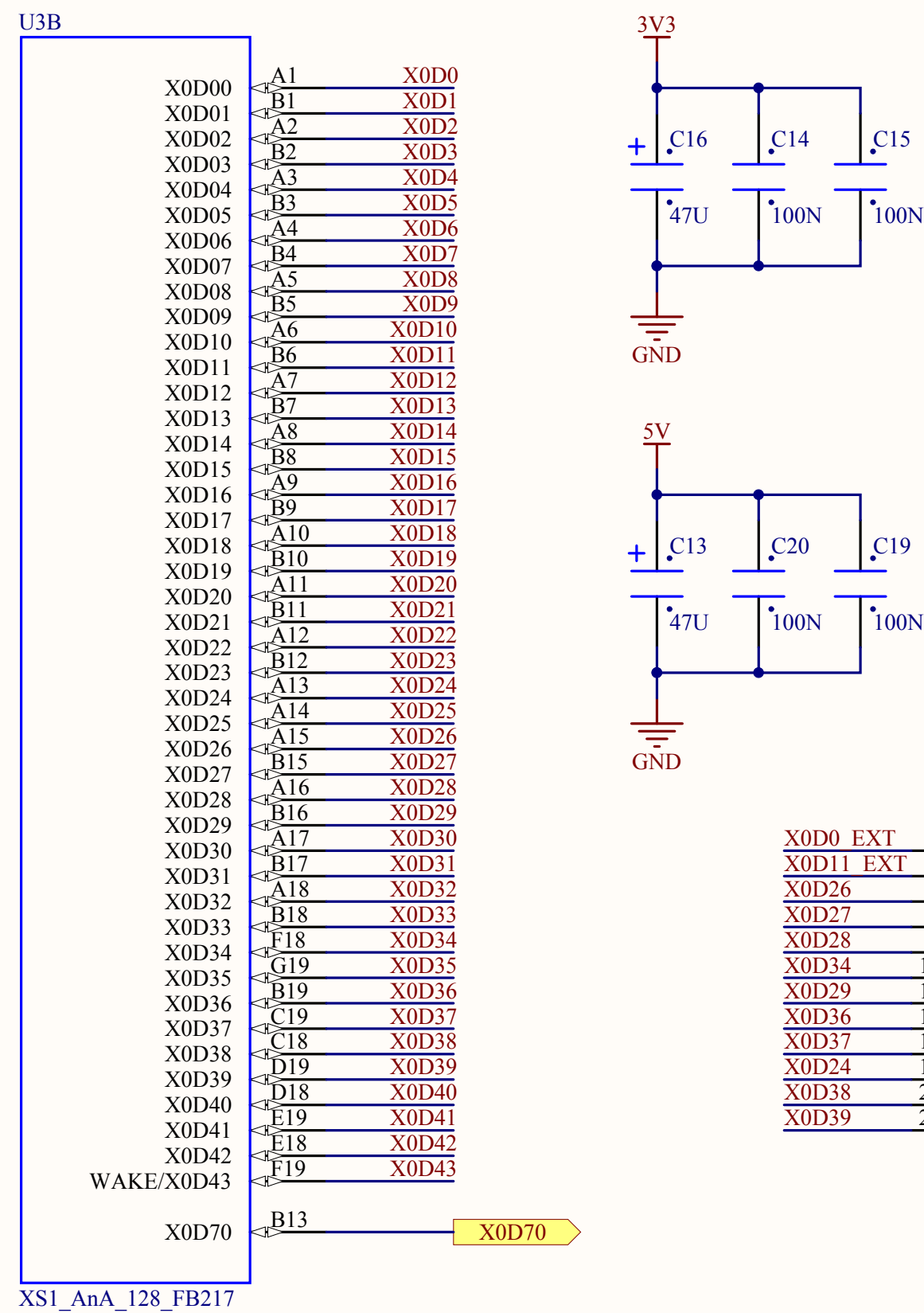
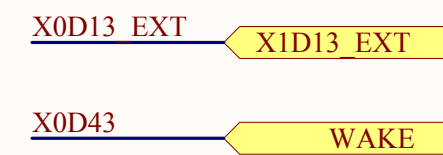
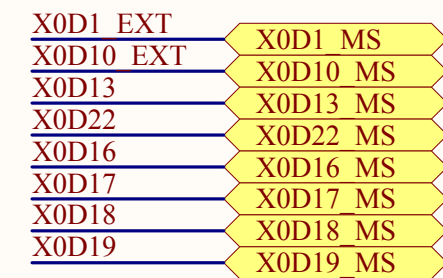
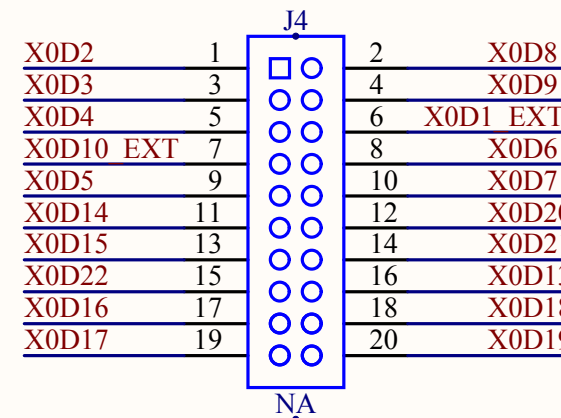
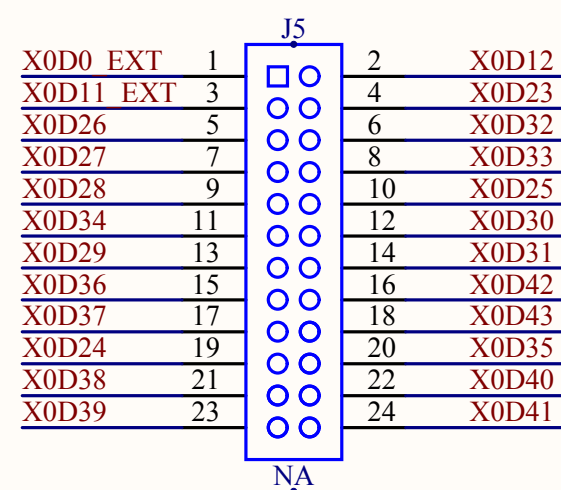
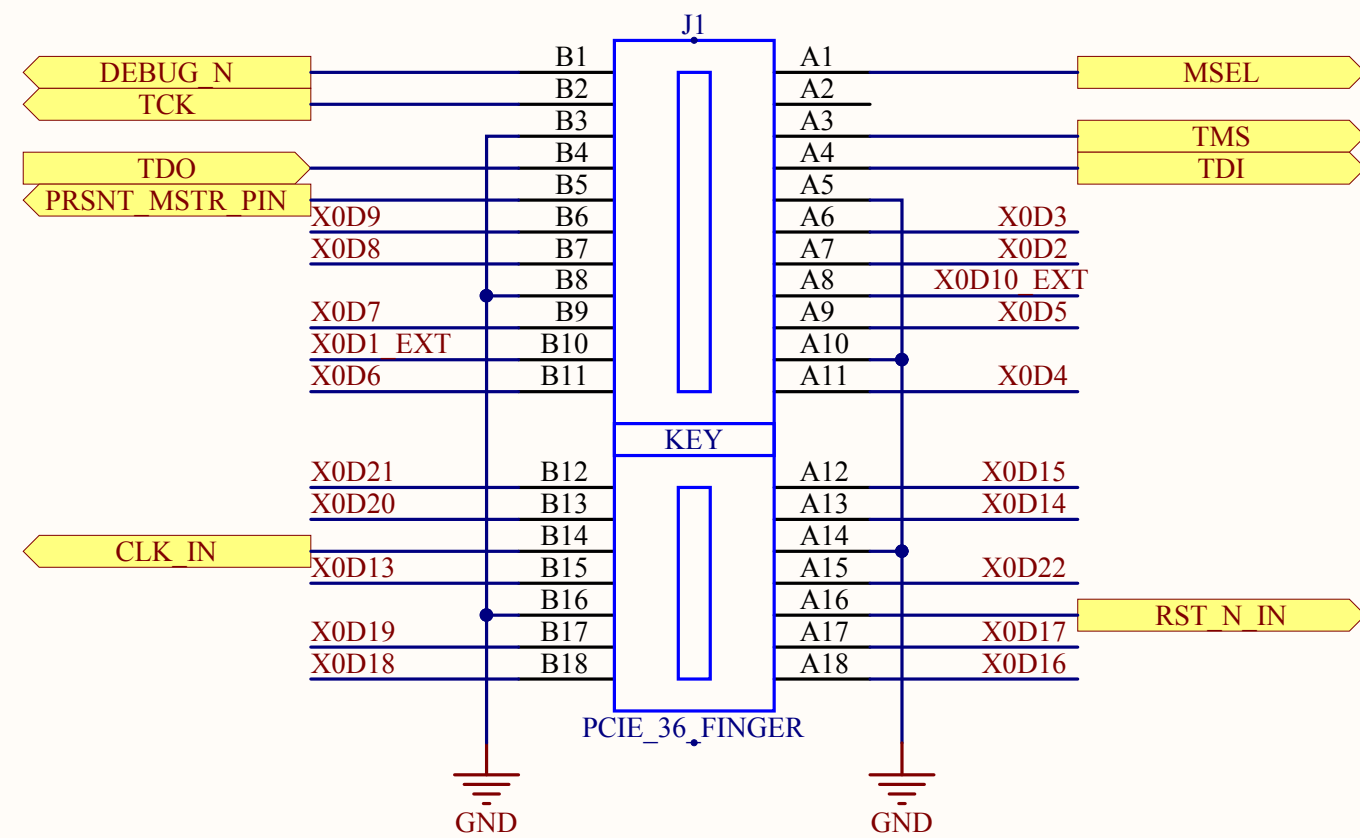


The schematic diagram illustrates the Cross Core IO Selection circuit. It features two comparators, U13 and U14, both SN74C8T1G125, which are configured as voltage followers. The inputs of these comparators are connected to the X0D13\_EXT and X1D12 signals. The outputs of the comparators are connected to the X0D13 and X1D12 signals. The circuit also includes a 3V3 power supply, several resistors (R5, R33, R28), capacitors (C1, C2, C3), and a jumper J13. A note indicates that the jumper J13 should be set to Pin R28.

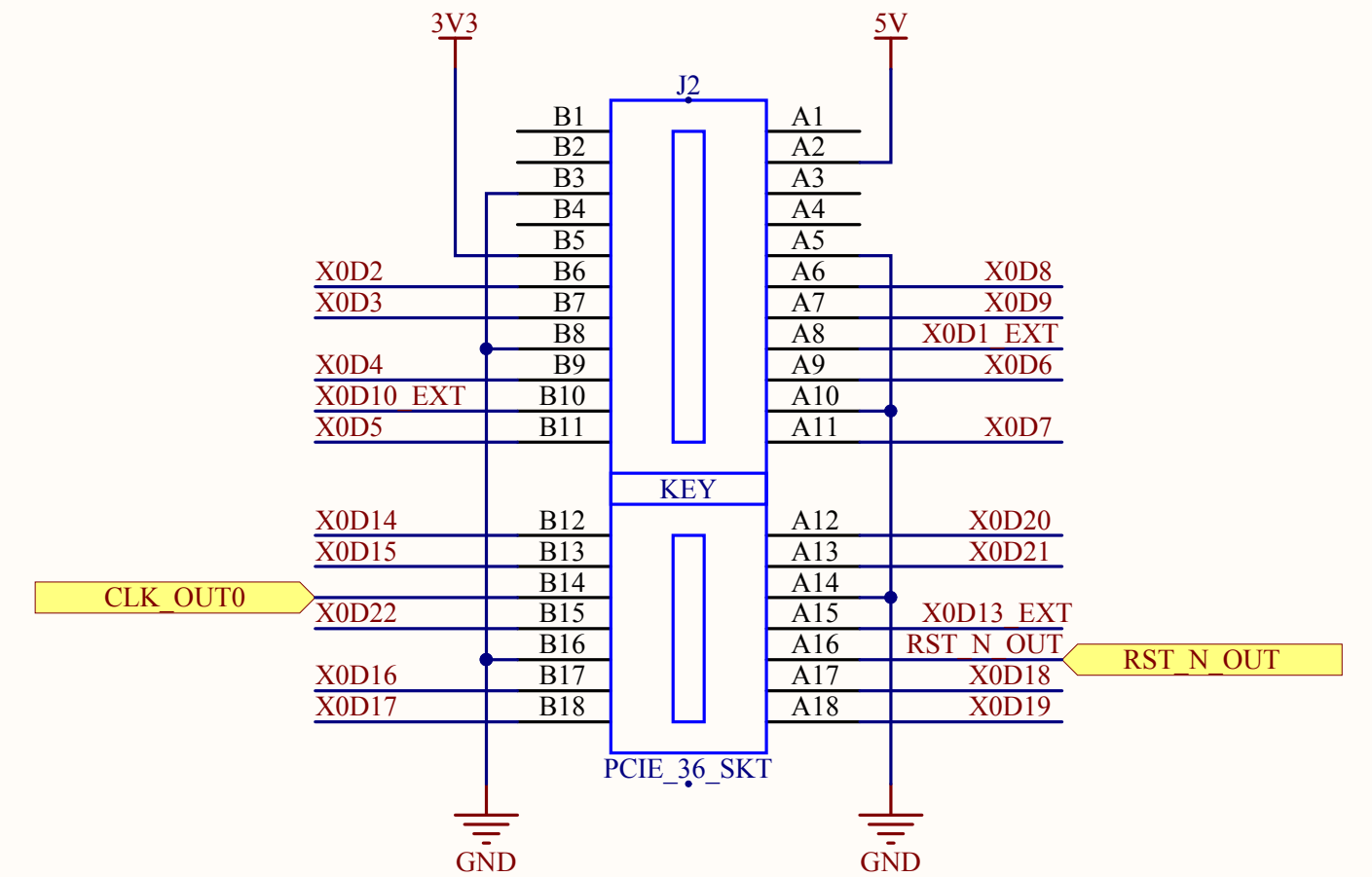




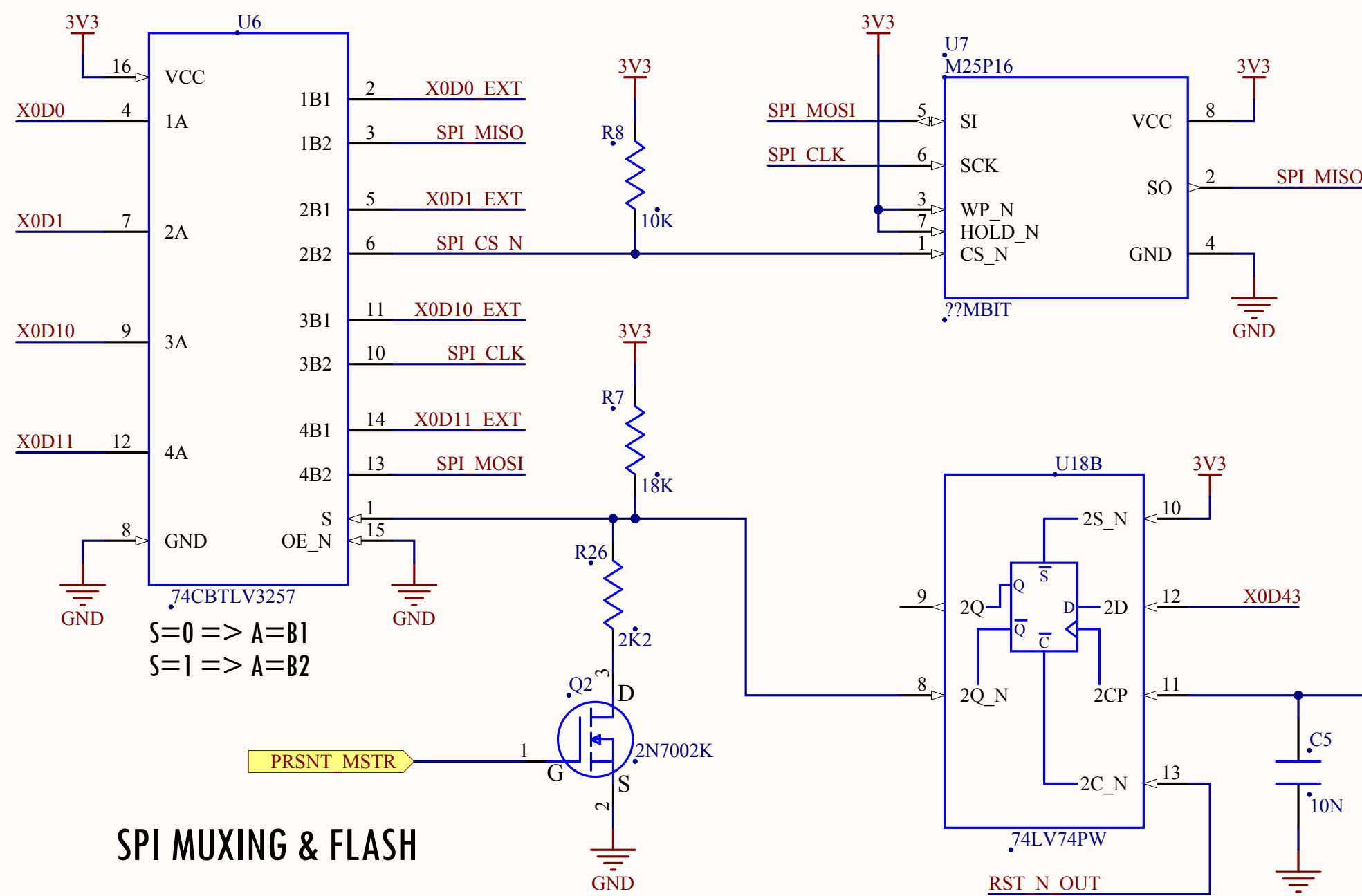
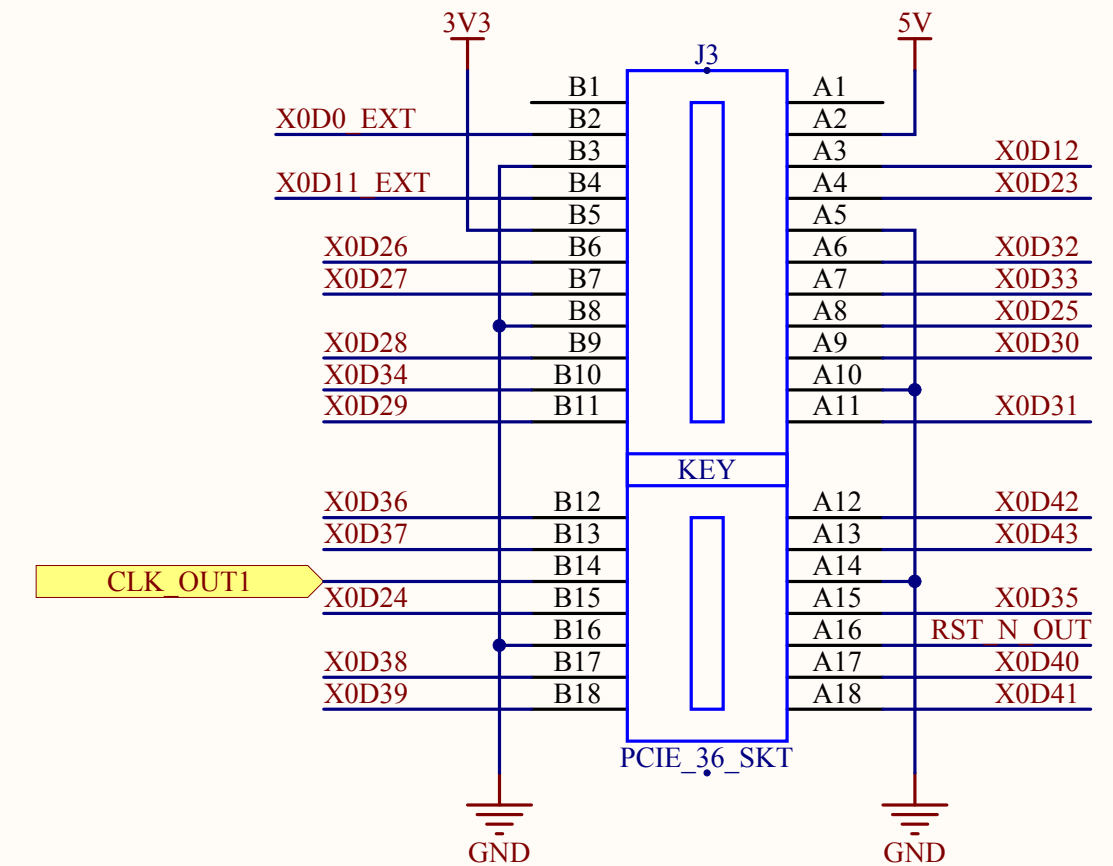
## PLUG CHAIN CONNECTOR



## SOCKET STAR SLOT

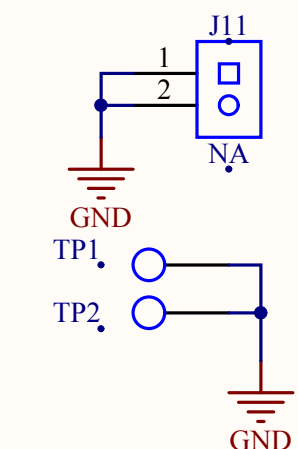
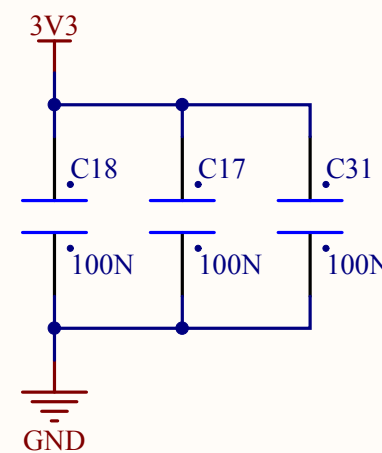


## SOCKET TRIANGLE SLOT

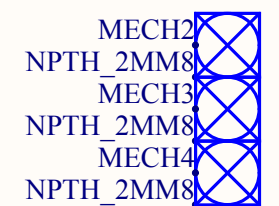


X0D43 = SPI EN/DIS  
X0D42 = LATCH

AFTER BOOT SELECT ENABLE AND BRING LATCH HIGH  
STATE WILL REMAIN UNTIL SYSTEM RESET



## PROBEPOINTS

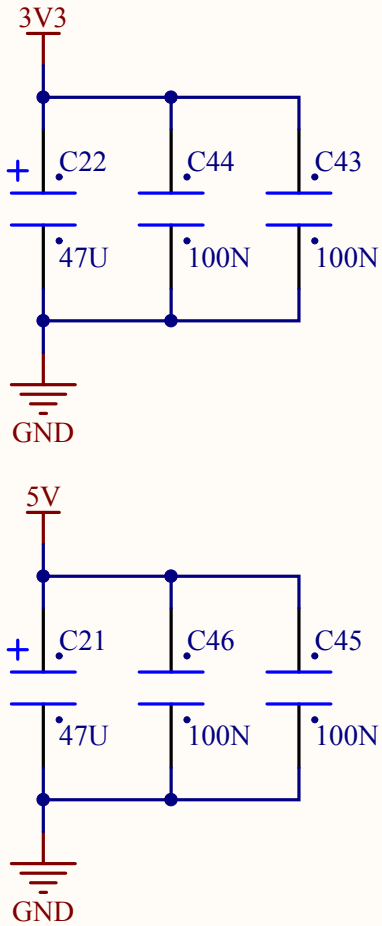
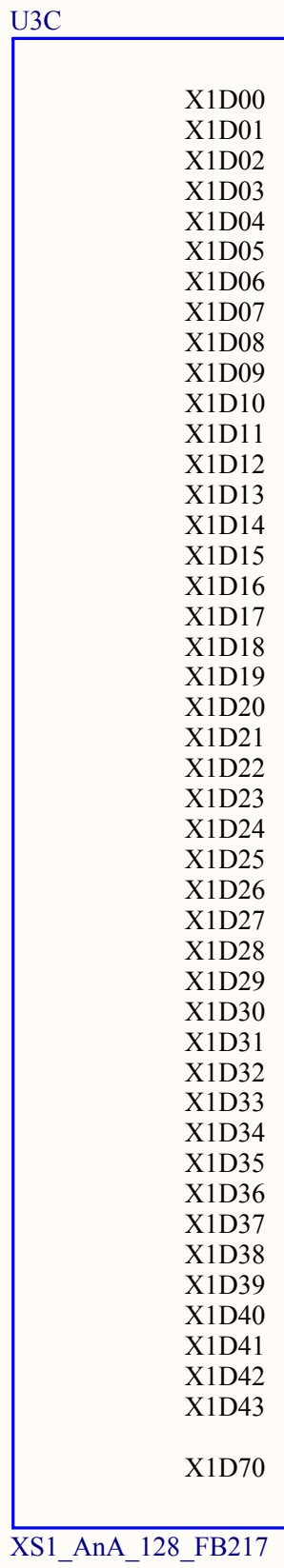


Copyright © XMOS Ltd 2012

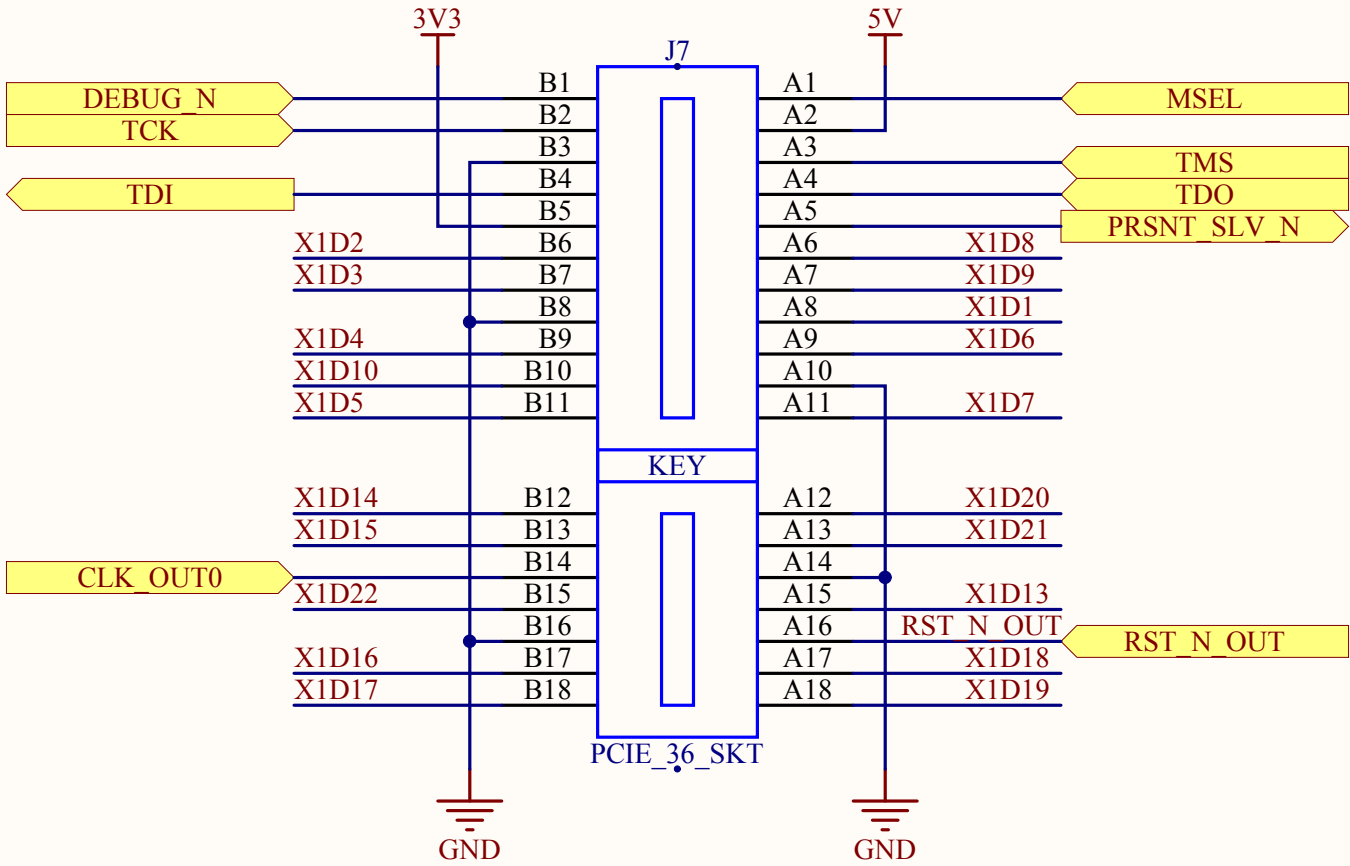
Project Name

A-00001-1 A16 Core Board.PrjPcb

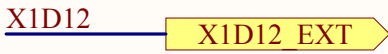
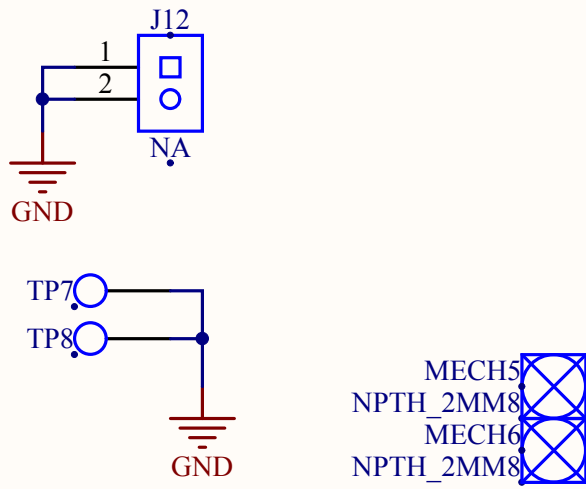
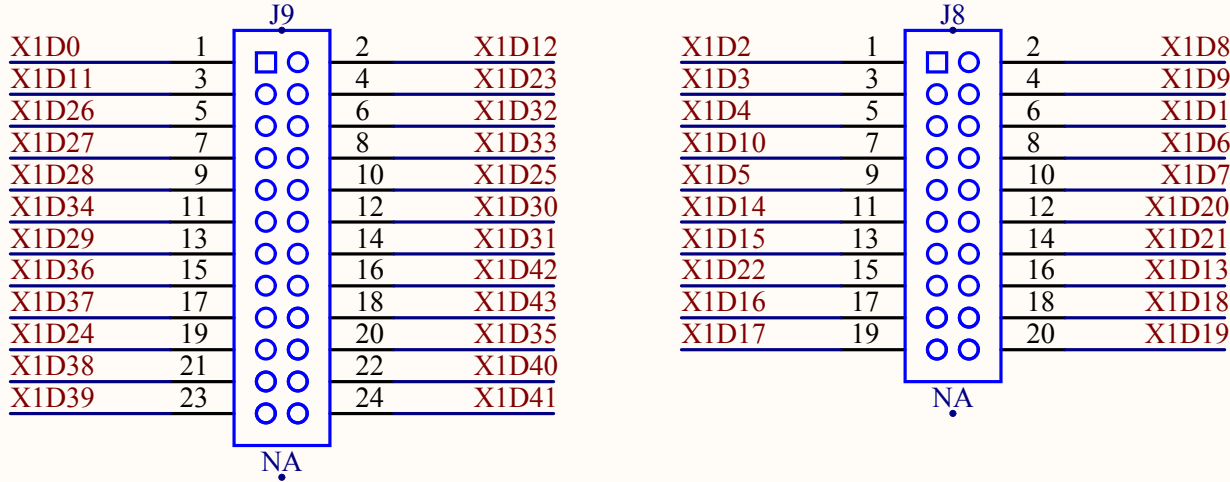
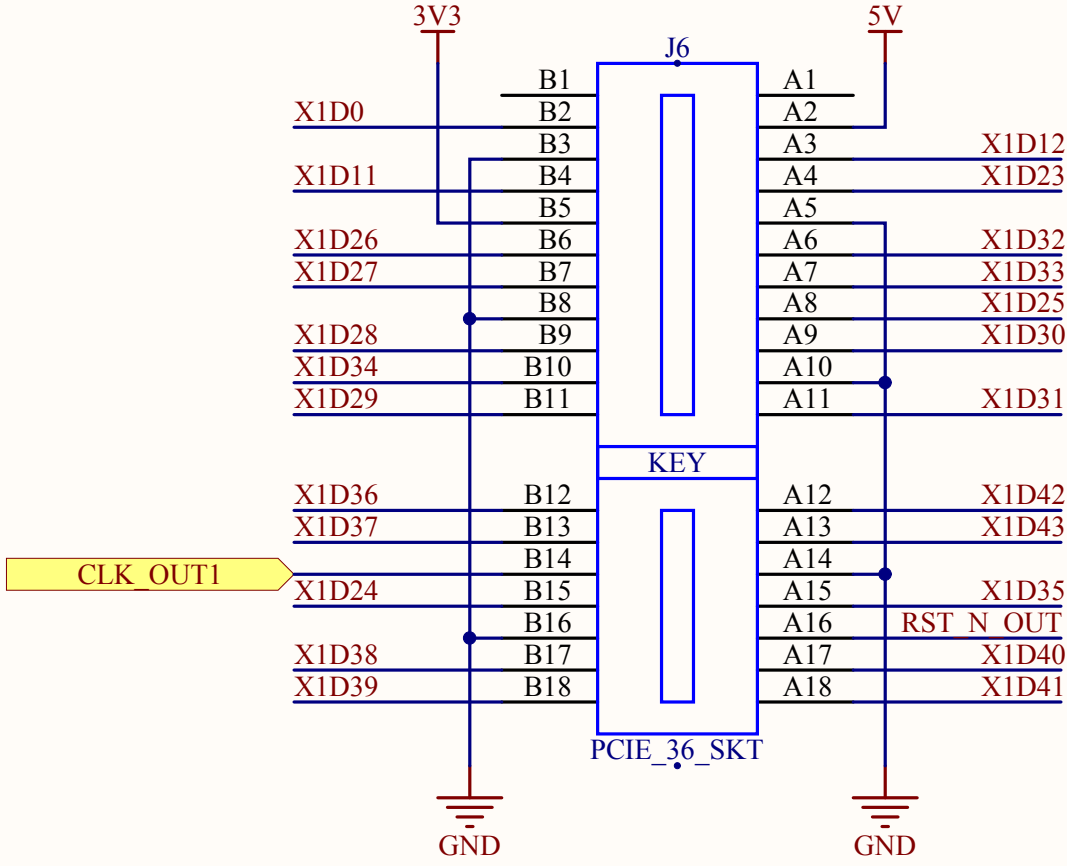
Size	Sheet Name	Rev
A3	A16 Core Board Tile 0	2
Date	21/10/2013	Sheet 2 of 5



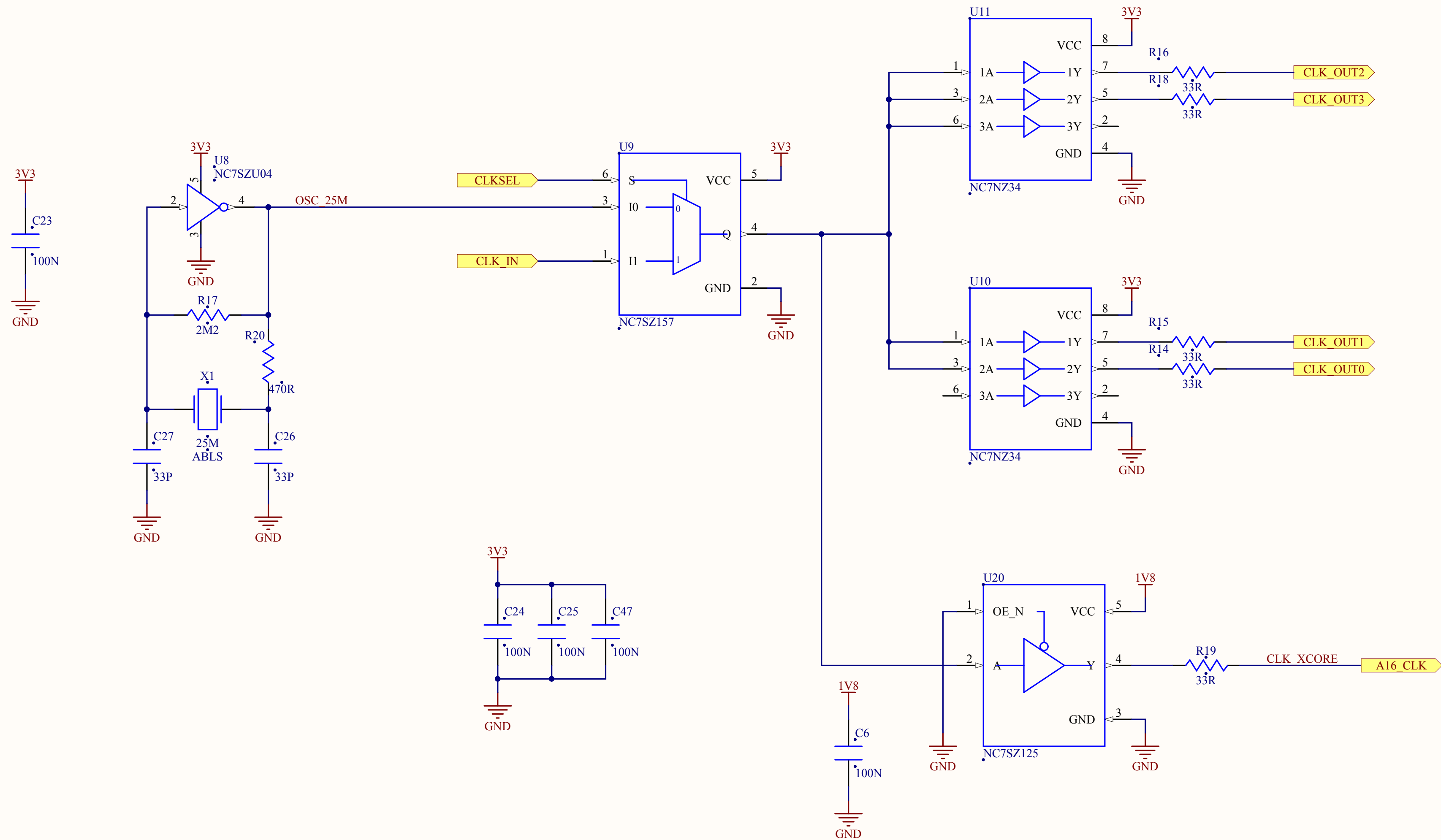
### SOCKET SQUARE SLOT



### SOCKET CIRCLE SLOT







Copyright © XMOS Ltd 2012

Project Name

A-00001-1 A16 Core Board.PrjPcb

Size	Sheet Name	Rev
A3	A16 Core Board Clocks	2
Date	21/10/2013	Sheet 4 of 5

